

ER2SP Dual Speed
 Artikelnummer ER2SP Dual Speed



Omschrijving
 Standaard met 5 meter stroomkabel.
 Vrijblijvende lengte van ketting,
 afstandbediening en lengte van
 stroomkabel.
 Verlenging van ketting is strikt verboden.
 Stalen ketting container op aanvraag.



Standaard

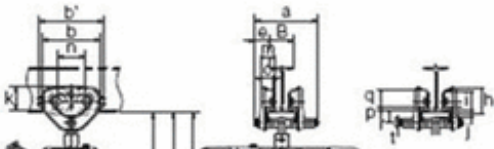
Opties

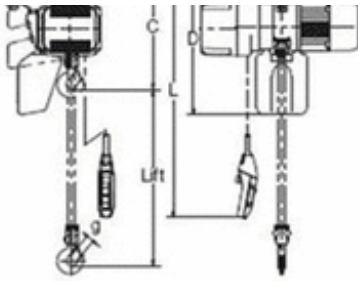
Type

Specifications

Capacity (t)	Product Code	Hoist Body	Standard Lift (m)	Push Button Cord L (m)	Lifting Motor		Lifting Speed (m/min)*		Load Chain Diameter, Chain (mm) X Falls	Classification ISO/FEM /ASME	TSP Flange Width B (mm)			Min. Radius Curve (mm)	Test Load (t)	Net Weight (kg)	Additional Weight per 1m Lift (kg)
					Output (kW)	Rating (%EEC)	50Hz				Standard	Option					
							High	Low				W20 (203mm)	W30 (305mm)				
125kg	ER2SP001IH	B			0.56		16.6	2.8	4.3 x 1					156kg	32	0.42	
	Peak Adjustable						1.4										
250kg	ER2SP003IS				0.9		10.6	1.8	6 x 1	M5/2m /44	60 to 102	103 to 203	1100	313kg	41		
	Peak Adjustable						0.9										
500kg	ER2SP003IH	C			0.56		15.7	2.6	7.7 x 1					625kg	37	0.81	
	Peak Adjustable						1.3										
1	ER2SP005IL	D	3	2.5	0.9	40/20	4.5	0.8	10.2 x 1	M4/16m /44				1300	1.25	53	1.33
	Peak Adjustable						0.4										
1.6	ER2SP005IS				1.8		8.5	1.4	11.2 x 2					2	85		
	Peak Adjustable						0.7										
2	ER2SP010IL	E					4.2	0.7	11.2 x 2		62 to 153	154 to 305	1500	2.5	86	2.3	
	Peak Adjustable						0.3										
3.2	ER2SP010IS				3.5		8.2	1.4	11.2 x 2					1700	3.13	124	2.8
	Peak Adjustable						0.7										
2.5	ER2SP016IS	F					5.3	0.9	10.2 x 2					4	128	4.7	
	Peak Adjustable						0.4										
5	ER2SP020IL						4.3	0.7	11.2 x 2					6.25	178	5.6	
	Peak Adjustable						0.4										
3.2	ER2SP020IS						8.2	1.4	11.2 x 2					2300	6.25	178	5.6
	Peak Adjustable						0.7										
5	ER2SP025IS						6.6	1.1	11.2 x 2					6.25	178	5.6	
	Peak Adjustable						0.6										
3.2	ER2SP032IS	E					5.2	0.9	11.2 x 2					6.25	178	5.6	
	Peak Adjustable						0.4										
5	ER2SP050IS	F					3.3	0.6	11.2 x 2					6.25	178	5.6	
	Peak Adjustable						0.3										

Note: The high speed is preset to the maximum speed in KITO factory. The speeds are adjustable between High and Low.





Dimensions (mm)

Capacity (t)	Product Code	Headroom C	D	a	b	b'	e	g	h	i	j	k	m	n	o	p	q	r	t
125kg	ER2SP001IH	305	470																
250kg	ER2SP003IS			204	182	212	46	27	82	60	21	76	47.5	84	42		54	38	22
500kg	ER2SP005IL	415	530																
	ER2SP005IS																		
1	ER2SP010IL	470	500	249	236	272	56	31	106	71	28	95	56	112	50	10	69	50	25
	ER2SP010IS																		
1.6	ER2SP016IS	570						34											
2	ER2SP020IL	635	600	300	280	316	69	39	127	85	34	112	71	131	63		83	62	32
		ER2SP020IS																	
2.5	ER2SP025IS	680	890	320	324	374	79		148	100	36	134	80	152	74		102	68	36
3.2	ER2SP032IS	780	910	207	400	450	53	47	169	118	46	144	81	178	70		104	88	54
5	ER2SP050IS	840																	